

Citizen Engagement (CE) Enhancements

CE7.11.1 to CE8.1.1 (December 2025 – June 2026)

Enablement Material

© 2026 Merative



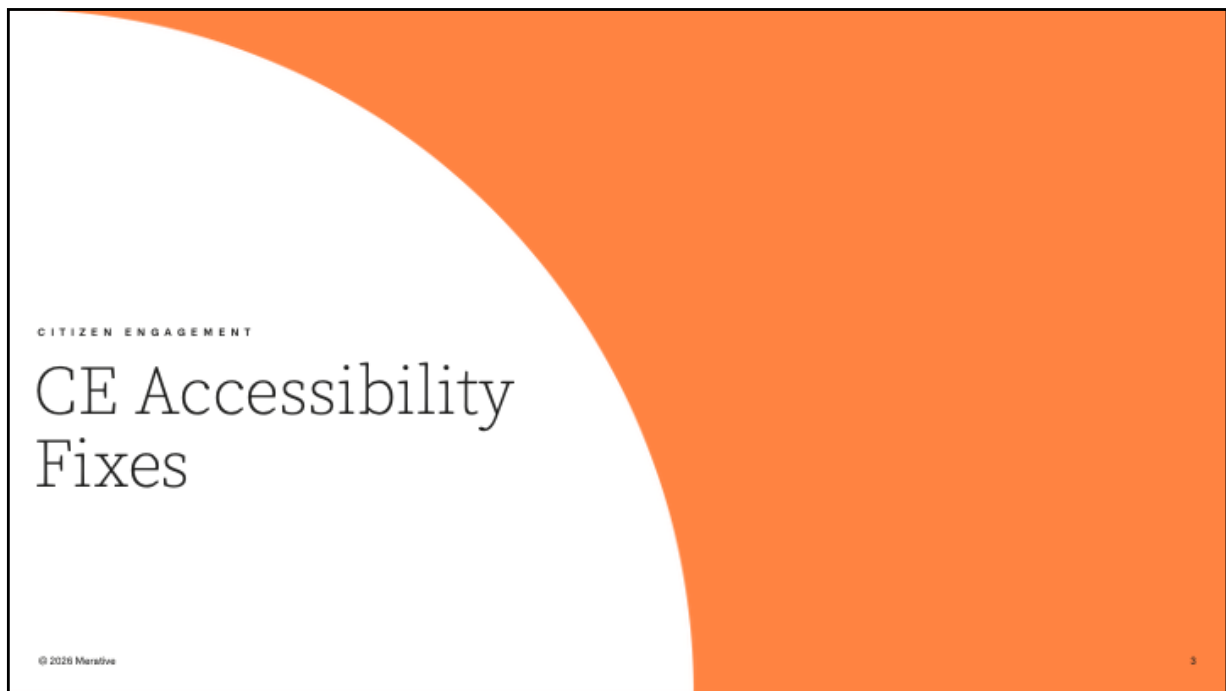
Hello and welcome to this deep dive presentation that introduces the enhancements to Cúram Citizen Engagement (CE) that are available in the timeframe between Cúram v8.2.1 and Cúram v8.2.2 which incorporates the monthly CE releases from December 2025 (CE v7.11.2) up to and including June 2026 (CE v8.2.1).

Note that Citizen Engagement incorporates the Cúram Universal Access Responsive Web Application and the Cúram Web Design System.

Agenda

1. CE Accessibility Fixes (from December 2025 – June 2026)
2. Non-Accessibility Improvements (from December 2025 – June 2026)
3. New design system features (from December 2025 – June 2026)

The main focus for the last few months has been on accessibility. First, there are CE accessibility defects which have been addressed in the releases leading up to June 2026 since December 2025. As well as accessibility, we have also delivered other 'non accessibility' improvements in the timeframe since December along with introducing some new features to the design system.



There is new legislation both in the US and Canada designed to ensure that users with accessibility needs receive equal access to the systems available to them.

In the US, a new rule was finalized revising Title II of the Americans with Disabilities Act. The rule requires that US state and local governments make their websites and mobile applications accessible for people with disabilities.

In Canada, there's the Accessible Canada Act (ACA) which came into force in 2019. The overarching goal of the ACA is to realize a barrier-free Canada by 2040. The legislation benefits all Canadians, especially persons with disabilities, through the proactive identification, removal and prevention of barriers to accessibility.

CE Accessibility Defect Fixes

50 accessibility fixes have been rolled out across **21** WCAG 2.1 Criteria* since December 2025

1.1.1 Adaptable – Non-text Content (1)	2.4.7 Navigable – Focus Visible (1)
1.3.1 Adaptable – Info and Relationships (11)	2.5.3 Input Modalities – Label in Name (1)
1.4.1 Distinguishable – Use of Color (2)	3.1.2 Understandable – Language of Parts (1)
1.4.3 Distinguishable – Contrast (Minimum) (1)	3.2.1 Predictable – on Focus (1)
1.4.4 Distinguishable – Resize Text (1)	3.2.4 Predictable – Consistent Identification (2)
1.4.10 Distinguishable – Reflow (2)	3.3.1 Input Assistance – Error Identification (3)
1.4.11 Distinguishable – Non-Text Contrast (2)	3.3.2 Input Assistance – Label or Instructions (1)
1.4.12 Distinguishable – Text Spacing (1)	3.3.4 Input Assistance – Error Prevention (1)
2.1.1 Operable – Keyboard (2)	4.1.2 Compatible – Name, Role, Value (6)
2.4.3 Navigable – Focus Order (2)	4.1.3 Compatible – Status Messages (4)
2.4.6 Navigable – Headings and Labels (4)	

Details of the fixes are provided in the release notes contained within the CE guides

* Some fixes cross multiple criteria so the numbers in brackets doesn't reflect number of defects addressed. The total number of accessibility defects addressed in the period is **37**

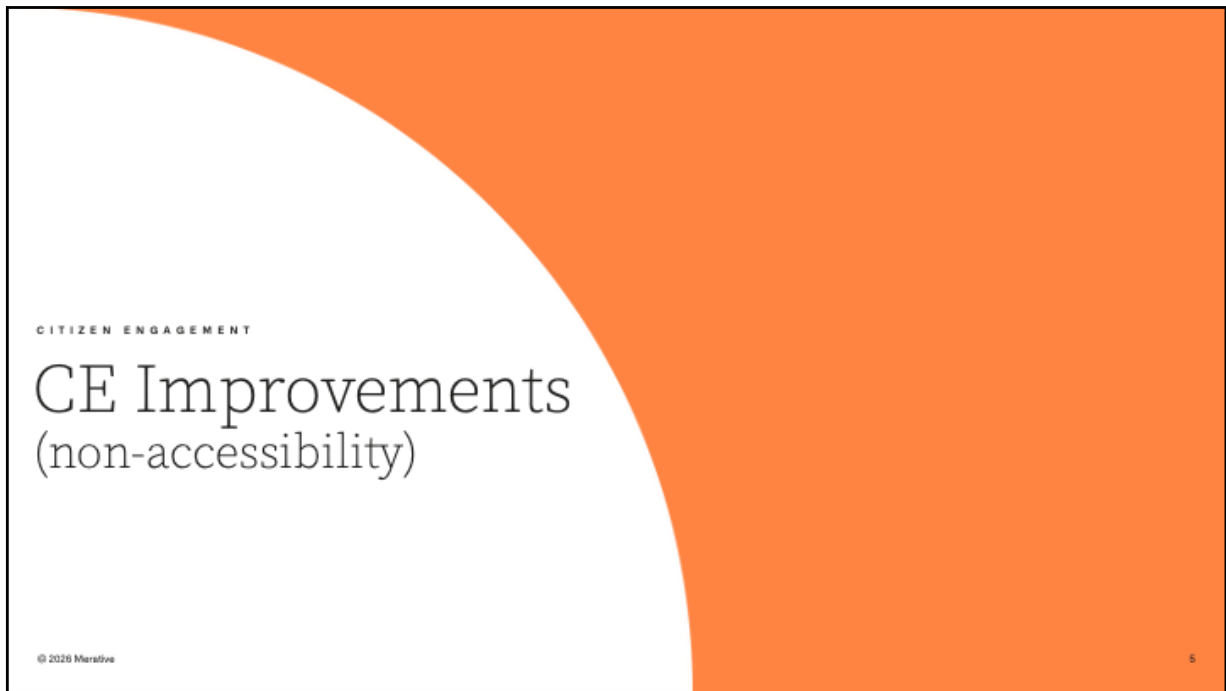
© 2026 Merative

4

As a result, we have continued to close the accessibility gaps in CE, to ensure accessibility compliance with the guidelines and standards including the Web Content Accessibility Guidelines WCAG 2.1 (level A&AA), Revised Section 508 standards and EN 301 549 requirements.

Throughout the last 6 releases of CE (from our v7.11.2 release in December 2025 to the current release v8.2.1 in June 2026), there has been a continued focus on reducing the number of accessibility issues that have the greatest impact on improving our users' experience especially important for a citizen facing application. We have addressed 50 accessibility issues across 21 WCAG 2.1 criteria. This will benefit hugely our US customers as their new legislation comes into effect in April 2026, but also our Canadian and other global customers.

Please see the *Cúram Universal Access Responsive Web Application* guide, and the *Cúram Design System Guide* for the release notes detailing the accessibility fixes which have been put in place for each release.



In addition to the Accessibility fixes, we have also delivered other 'non accessibility' improvements in the timeframe since December 2025.

CE Improvements (non-accessibility)

6 other improvements have been rolled out since December 2025

	Problem	Resolution	Known Issue	Fix Version
1.	Re-selecting the already-active language from the language dropdown incorrectly called <code>resetStore()</code> instead of <code>resetStoreOnLanguageChange()</code> , which wiped the entire Redux store and cleared all user data from the screen	The function reference was corrected so the store only resets when a genuinely different language is chosen	-	CE v7.11.2
2.	After logging into Citizen Engagement, the home page failed to load (showing a blank screen) caused by a dependency on now deprecated packages (<code>@babel/runtime-corejs2</code> and <code>@babel/runtime-corejs3</code>)	The deprecated packages were replaced with <code>@babel/runtime</code> , restoring stable home page loading	DT037462	CE v8.0.0
3.	The out-of-the-box Vite configuration's <code>build.onLoad</code> regex filter used only Unix-style forward slashes (/) for path separators, causing JSX syntax errors on Windows where backslashes (\) are used	The regex in <code>vite.config.js</code> was updated to support both Unix (/) and Windows (\) path separators	-	CEv8.0.0
4.	When users edited a person and returned to the summary page, the radio button layout control was replaced with a non-editable text field that did not show the previously saved response, making it appear as though their choice had been lost	The summary view now correctly displays the saved radio selection in a read-only text input so users can see the answer they previously provided	DT037496	CE v8.1.1

© 2026 Merative

6

The improvements (numbered 1 to 6) are described by detailing the problem and the resolution applied. If the problem was a known issue, the known issue number is supplied for reference.

To view full details of each problem and resolution, consult the *Cúram Universal Access Responsive Web Application* guide, and the *Cúram Design System Guide* for the release notes.

CE Improvements (non-accessibility)

	Problem	Resolution	Known Issue	Fix Version
5.	When a linked user navigated to My Profile via the "Review your profile" card on the Your Account page, the Profile tab was not highlighted, making it unclear which tab was active	The profile page was updated so that it opens with focus correctly placed on the Profile tab and the active tab state displayed as expected	DT037491	CE v8.1.1
6.	Incorrect validation errors occurred for checkboxes within Container elements	A function in ContainerField.js wrongly treated the false value from unchecked checkboxes as "empty" or "false-like", converting it to an empty string and corrupting the checkbox state after users changed selections and returned. The function in ContainerField.js now converts only undefined or null values to an empty string, preserving the false value from unchecked checkboxes	DT037495	CE v8.1.1

Details of the improvements are provided in the release notes contained within the CE guides

Software Upgrades

A number of software upgrades are included in the CE v8.0.0 release

	Upgrade	Details
1.	Jest v27 to v29	The responsive web application is developed using React and uses Jest, a JavaScript testing framework to ensure code quality by testing functions, components, and applications, for React. The version of Jest has been updated from 27 to 29.
2.	ESLint v7 to v9	The responsive web application uses ESLint, a static code analysis tool for JavaScript that detects problematic patterns and enforces code standards. The ESLint version has been updated from 7 to 9.
3.	React 18.2.0 to 18.3.1	The version of React and React-dom used has been updated from React 18.2.0 to React 18.3.1 in package.json. These updates eliminate React deprecation warnings and ensure forward compatibility with upcoming React versions.
4.	WDS Core sunset	As part of the ongoing evolution of the Design System, the WDS Core package was sunset following its decoupling from WDS React earlier in 2025. Starting with WDS 2.0.0 and CE v8.0.0, WDS Core will no longer be shipped or imported by default. This change streamlines the package structure by consolidating design system assets within the React package, reducing dependency complexity.

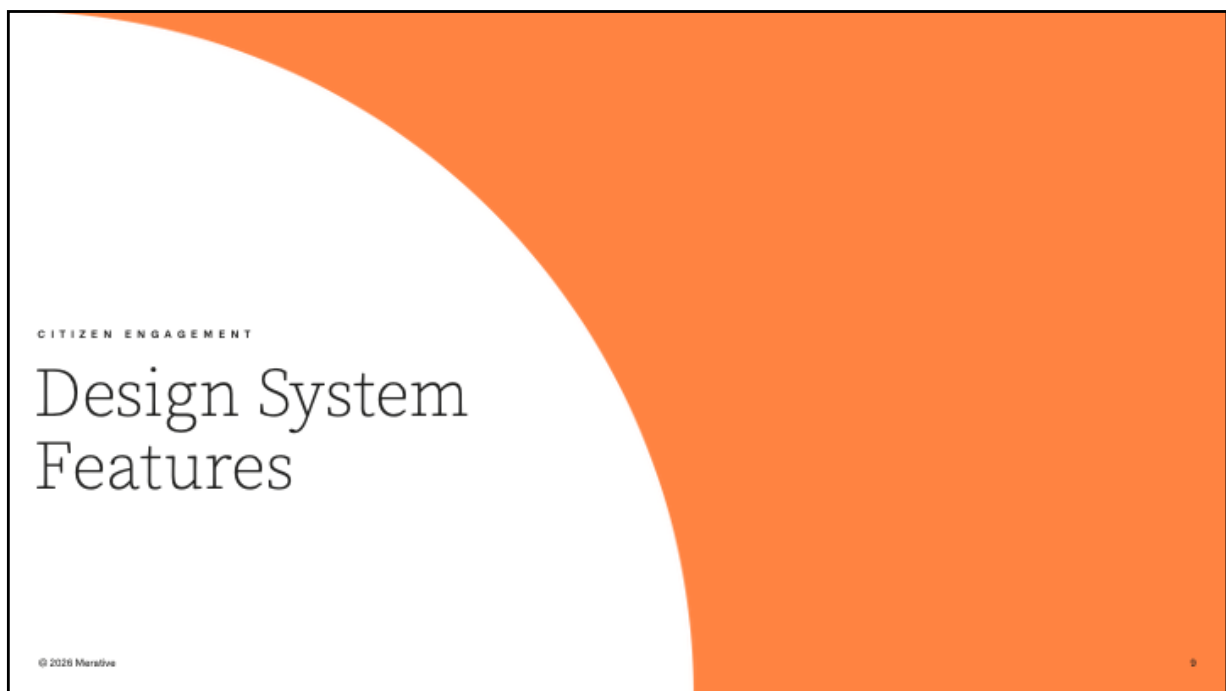
To upgrade an existing application to CE v8.0.0, several breaking changes must be resolved. The v8.0.0 migration section included in the CE guide enumerates the steps required to upgrade.

© 2026 Merative

8

A number of software upgrades were included in the CE v8.0.0 release in February 2026. To view full details of each upgrade and steps to take, consult the v8.0.0 migration section within the *Cúram Universal Access Responsive Web Application* guide.

Note that Citizen Engagement incorporates the *Cúram Universal Access Responsive Web Application* and the *Cúram Web Design System*.



We have also introduced some new features to the design system.

For those not familiar with the design system, it provides design and front-end development resources for creating websites and digital services to the standard governments require. The system incorporates the highest usability and accessibility standards, helps ensure a consistent experience for all users and builds on the international best practice for government digital services.

There is a design system storybook which contains information about the component library and associated resources. This is located in the docs folder of the Universal Access Responsive Web Application download. The easiest way to navigate it is to click on the 'index.html'.

CE Design System Features

The following enhancement to the design system was rolled out in CE v8.2.0

1.	Enhancement	Value	CE version
	Tooltip support for read-only icons	The TextInput component now supports a new readOnlyTooltipText property that displays a tooltip when users hover over the read-only icon. This gives developers a simple way to communicate why a field is read-only, improving the user experience by providing contextual guidance directly at the point of interaction rather than leaving users guessing.	CE v8.2.0

Details of this new feature is provided in the 'What's New' contained within the CE guides

The enhancements are described in the table on this slide.

To view full details of this enhancement, consult the *Cúram Design System Guide* for the release notes.