

Cúram H.R.1 Medicaid Community Engagement Cartridge 1.1.0

May 2026 Enablement Material



Contents

-
1. Overview
 2. Documentation
 3. Rules Overview
 4. Business Scenarios
 5. Key Considerations
 6. Roadmap Candidates

Overview

The **HR1 Medicaid Community Engagement Cartridge 1.1.0 release** is the second release of the cartridge and is cumulative, containing all capabilities from Release 1 (version 1.0.0) along with the new enhancements delivered in this update.

Release 1 introduced support for determining the application lookback period. Release 2 builds on that foundation by delivering the renewal-specific rules and rate table values required to calculate the lookback period during renewals and scheduled redeterminations.

Overview - New Cartridge Adapts to Policy, Saves Time, and Rework

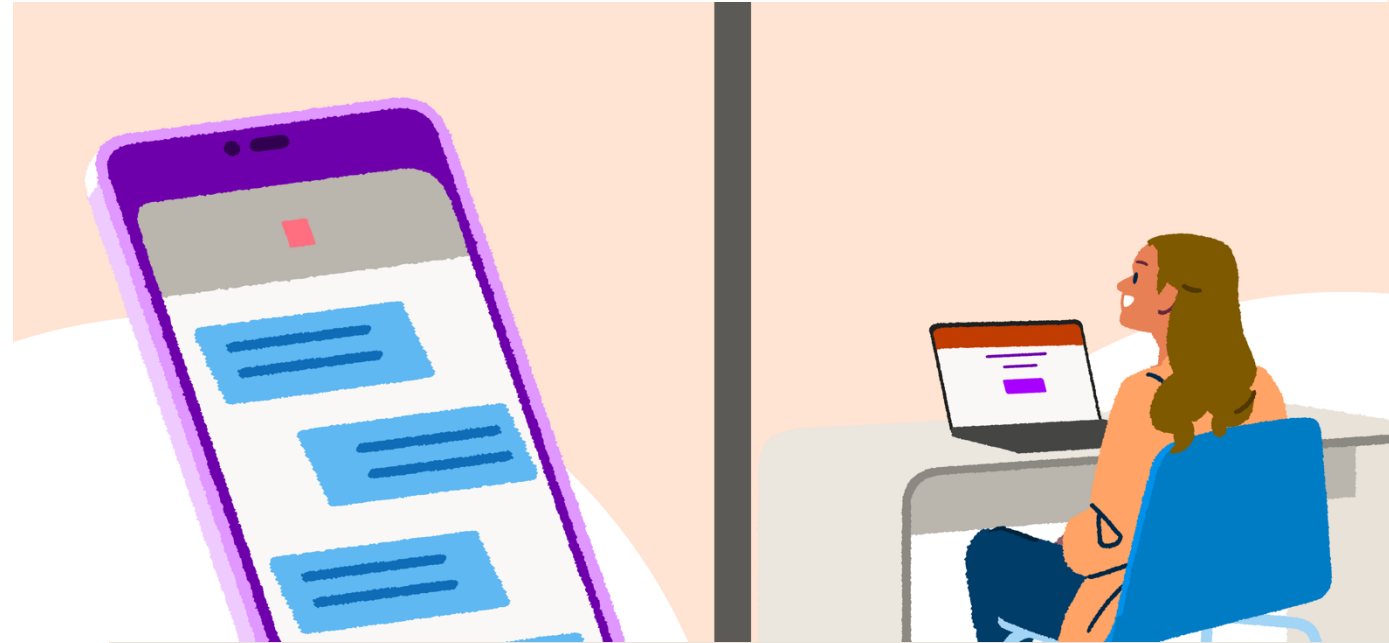
Medicaid Community Engagement Cartridge

Provides **federal rules and evidence** required to capture new data and evaluate an individual's exemptions and compliance.

- Eliminates the need for states to build core Community Engagement Eligibility rules & evidence
- **Accelerates** the implementation process for community engagement requirements
- It is available to **any customer** on v8.x
- Upgrade **not required**, Cartridge will be delivered as a zip file.

Implementation

- Customers will **need to integrate these rules** into existing rulesets, screens, IEG scripts, verification strategies and business process.
- **Cartridge** designed to accommodate state specific options through extension.



Documentation available for the Cartridge

Document	Description	Location	
HR1 Medicaid Community Engagement Cartridge Compliance Rules .xls	<p>This document describes the Cúram business rule and data model requirements used to assess Community Engagement compliance for Medicaid applicants during the application lookback period, as defined in Sections 71119(a)(xx)(1)(A) and 71119(a)(xx)(3)(A) of the HR1 Act.</p> <p>It also covers the lookback period rules applicable to Renewals and Scheduled Redeterminations, as outlined in Section 71119(a)(xx)(1)(B) of the HR1 Act.</p>	<p>All supporting materials are available via the HR1 Medicaid Community Engagement Cartridge ZIP and the Merative Support Portal.</p> <p>To access documents from Merative Support Portal:</p> <ul style="list-style-type: none"> - Log in to Merative Support https://merative.my.site.com/mysupport/s/ - Enter your credentials - Navigate to Knowledge Base, then Article Search, select “Curam Knowledge” as the Data Category Group and then select “HR1 Medicaid Community Engagement” as the Data Category. <p>If you don’t yet have access, please submit a request through the portal.</p>	
HR1 Medicaid Community Engagement Cartridge Evidence .xls	<p>This document outlines the new and updated evidence types required to support the HR1 Medicaid Community Engagement Compliance Rules.</p>		
HR1 Medicaid Community Engagement Cartridge Business Scenarios .xls	<p>This document outlines a set of key business scenarios supported by the evidence and rules delivered as part of the HR1 Medicaid Community Engagement Cartridge.</p> <p>Note: These scenarios are intended to illustrate typical use cases and are not intended to represent an exhaustive list of all possible scenarios.</p>		
HR1 Medicaid Community Engagement Cartridge Renewal Business Scenarios .xls	<p>This document outlines key renewal/scheduled redetermination business scenarios covered by the evidence and rules provided in the HR1 Medicaid Community Engagement Cartridge. Scenarios cover variations in the renewal/scheduled redetermination look-back period and number of compliance months.</p>		
HR1 Medicaid Community Engagement Cartridge Developer Guide .pdf	<p>This document focuses on the delivered HR1 Standalone Rules and Evidence, describing the structure and organization of the delivered HR1 rule sets and supporting evidence.</p> <p>This document assumes familiarity with Cúram development, in particular the CER rules framework and Dynamic Evidence concepts. It is intended for technical users responsible for developing, reviewing, configuring, extending, or integrating the HR1 rules.</p>		
README .txt	<p>Contains installation, upgrade, and rollback steps for taking on the cartridge.</p> <p>Intended for technical users responsible for environment setup and cartridge deployment.</p>		<p>README.txt is available via the HR1 Medicaid Community Engagement Cartridge ZIP</p>

Rules Overview

Included in Cartridge

Qualifying Activities
<ul style="list-style-type: none">• 80 hours per month of work, community service, and/or work program participation• Enrolled in education at least half time• Any combination of the above totaling a minimum of 80 hours per month• Monthly income of minimum wage multiplied by 80 hours• Seasonal workers with an average monthly income over 6 months of minimum wage multiplied by 80 hours

Included in Cartridge

Mandatory Exemptions
<ul style="list-style-type: none">• Under the age of 19• Parent/guardian/caretakers of dependent children under age 14 or disabled individuals• Pregnant or receiving postpartum coverage• Medically frail• Meeting SNAP/TANF work requirements• American Indians and Alaska Natives• Disabled veterans• Incarcerated or released from incarceration within 90 days• Entitled to Medicare Part A /enrolled in Medicare Part B• Participating in a drug addiction or alcoholic treatment and rehabilitation program

Currently not in Scope

Optional Hardship Exceptions
<p>State option to allow short-term hardship exceptions for an individual who:</p> <ul style="list-style-type: none">• Was in an inpatient hospital, nursing facility, intermediate care facility, or inpatient psychiatric hospital• Resided in a county with a federally declared emergency or disaster• Resided in a county with a high unemployment rate (above 8% or 1.5x the national unemployment rate), subject to a request from the state to the Secretary• Traveled outside the individual’s community for an extended period of time to receive medical services for themselves or their dependent

Reference: [KFF: A Closer Look at the Work Requirement Provisions in the 2025 Federal Budget Reconciliation Law](#)

Business Scenarios - V1.0.0

Key business scenarios supported by the evidence and rules provided in the HR1 Medicaid Community Engagement Cartridge. These are available through the HR1 Medicaid Community Engagement Cartridge ZIP and the Merative Support Portal.

	Scenario Overview	Business Rule Impacted	Scenario Description
1	Individual satisfies Mandatory Exemption (Urban Indian) in Lookback Period (1 month)	Individual is an Indian, Urban Indian, Californian Indian or determined eligible as an Indian for the Indian Health Services by the Secretary	This scenario demonstrates that the individual is compliant in the lookback month and exempt from Medicaid work requirements by meeting the mandatory Urban Indian exemption.
2	Individual satisfies Mandatory Exemption (SNAP work compliance) in Lookback Period (1 month)	Individual is a member of a household that receives SNAP benefits and is not exempt from the SNAP work requirements	This scenario demonstrates that the individual is compliant in the lookback month and exempt from Medicaid work requirements as they are a member of a household that receives SNAP benefits and is not exempt from the SNAP work requirements.
3	Individual satisfies Qualifying Activity (Educational program hours) in Lookback Period (1 month)	(D) Individual Is enrolled in an educational program at least half-time	This scenario demonstrates that the individual is compliant with Medicaid work requirements in the lookback month by meeting the educational program hours qualifying activity requirement.
4	Individual does not satisfy Qualifying Activity or Mandatory Exemption in Lookback Period (1 month)	(B) The individual completes not less than 80 hours of community service	This scenario demonstrates that an individual is non-compliant with Medicaid work requirements if they fail to meet the qualifying activities and do not qualify for a mandatory exemption.
5	Individual satisfies Qualifying Activity (Seasonal worker) in Lookback Period (3 months)	(G) An individual's average monthly income over the preceding 6 months must be greater than or equal to the Federal Minimum Wage multiplied by 80 hours AND the individual is a Seasonal Worker	This scenario demonstrates that an individual is compliant with the Medicaid work requirements if their average monthly income over the preceding 6 months is greater than or equal to the Federal Minimum Wage multiplied by 80 hours AND the individual is a seasonal worker.

Business Scenarios - V1.0.0

Key business scenarios supported by the evidence and rules provided in the HR1 Medicaid Community Engagement Cartridge. These are available through the HR1 Medicaid Community Engagement Cartridge ZIP and the Merative Support Portal.

	Scenario Overview	Business Rule Impacted	Scenario Description
6	Individual satisfies Mandatory Exemption (Inmate of a public institution) in Lookback Period (3 months)	Individual is an inmate of a public institution in the look back month or at any point during the three months leading up to the look back month	This scenario demonstrates that an individual is exempt from Medicaid work requirements if they were an inmate of a public institution during the lookback month or at any point within the three months leading up to it.
7	Individual satisfies multiple Mandatory Exemptions concurrently (Parent of a Disabled Individual and Caregiver of Disabled Individual) in Lookback Period (3 months)	Individual is a parent, guardian, caretaker relative or family caregiver of a dependent child 13 years of age and under OR a disabled individual	This scenario demonstrates that the individual is compliant throughout the entire 3 month lookback period by meeting multiple mandatory exemptions each month, caring for a disabled adult child and a disabled mother.
8	Individual satisfies multiple Mandatory Exemptions not-overlapping (Parent of a Disabled individual, Caregiver of Disabled Individual) in Lookback Period (3 months)	Individual is a parent, guardian, caretaker relative or family caregiver of a dependent child 13 years of age and under OR a disabled individual	This scenario demonstrates that the individual is compliant throughout the entire 3 month lookback period by meeting the mandatory Parent/Guardian/Caretaker Relative/Family Caregiver exemptions each month. The exemption type changes during the lookback period based on household composition and caregiver responsibilities.
9	Individual satisfies Qualifying Activity (Working hours) and Mandatory Exemption (Caretaker relative of a disabled individual) in Lookback Period (3 months)	Individual is a parent, guardian, caretaker relative or family caregiver of a dependent child 13 years of age and under OR a disabled individual	This scenario demonstrates that the individual is compliant with Medicaid work requirements when they meet a qualifying activity and mandatory exemption in the lookback period.

Renewals Business Scenarios – V.1.1.0

Key business scenarios supported by the evidence and rules provided in the HR1 Medicaid Community Engagement Cartridge. These are available through the HR1 Medicaid Community Engagement Cartridge ZIP and the Merative Support Portal.

	Scenario Overview	Business Rule Impacted	Scenario Description
1	Individual satisfies Mandatory Exemption (SNAP work compliance) in Renewal Look-back Period (6 months with 1 month of compliance required)	Individual is a member of a household that receives SNAP benefits and is not exempt from the SNAP work requirements	This scenario demonstrates that the individual is compliant in the renewal look-back period and exempt from Medicaid work requirements as they are a member of a household that receives SNAP benefits and is not exempt from the SNAP work requirements.
2	Individual satisfies Qualifying Activity (Educational program hours) in Renewal Look-back Period (6 months with 2 months of compliance required)	Individual is enrolled in an educational program at least half-time	This scenario demonstrates that the individual is compliant with Medicaid work requirements in the renewal look-back period by meeting the educational program hours qualifying activity requirement.
3	Individual does not satisfy Qualifying Activity or Mandatory Exemption in Scheduled Redetermination Look-back Period (3 months with 3 months of compliance required)	The individual completes not less than 80 hours of community service.	This scenario demonstrates that an individual is non-compliant with Medicaid work requirements in the scheduled redetermination look-back period (where a state redetermines compliance more frequently than at renewal) if they fail to meet the qualifying activities and do not qualify for a mandatory exemption for the required number of months.
4	Individual satisfies Qualifying Activity (Seasonal worker) in Renewal Look-back Period (6 months with 1 month of compliance required)	An individual's average monthly income over the preceding 6 months must be greater than or equal to the Federal Minimum Wage multiplied by 80 hours AND the individual is a Seasonal Worker	This scenario demonstrates that an individual is compliant with the Medicaid work requirements in the renewal period if, for the required number of months in the period, their average monthly income over the preceding 6 months is greater than or equal to the Federal Minimum Wage multiplied by 80 hours AND the individual is a seasonal worker. Note: In order to satisfy the seasonal worker qualifying activity requirement, and not the monthly income qualifying activity requirement, the individual's monthly income for each month in the look-back period must be less than \$580.00.

Renewals Business Scenarios – V.1.1.0

Key business scenarios supported by the evidence and rules provided in the HR1 Medicaid Community Engagement Cartridge. These are available through the HR1 Medicaid Community Engagement Cartridge ZIP and the Merative Support Portal.


	Scenario Overview	Business Rule Impacted	Scenario Description
5	Individual satisfies Mandatory Exemption (Inmate of a public institution) in Renewal Look-back Period (6 months with 1 month of compliance required)	Individual is an inmate of a public institution in the look back month or at any point during the three months leading up to the look-back month	This scenario demonstrates that an individual is exempt from the Medicaid work requirements in the renewal period if, for the required number of months in the period, they were an inmate of a public institution during the look-back month or at any point within the three months leading up to it.
6	Individual satisfies multiple Mandatory Exemptions concurrently (Parent of a Disabled Individual and Caregiver of Disabled Individual) in the Renewal Look-back Period (6 months with 3 months of compliance required)	Individual is a parent, guardian, caretaker relative or family caregiver of a dependent child 13 years of age and under OR a disabled individual	This scenario demonstrates that the individual is compliant throughout the entire 6 month look-back period by meeting multiple mandatory exemptions each month, caring for a disabled adult child and a disabled mother.
7	Individual satisfies multiple Mandatory Exemptions not-overlapping (Parent of a Disabled individual, Caregiver of Disabled Individual) in Renewal Look-back Period (6 months with 3 months compliance required)	Individual is a parent, guardian, caretaker relative or family caregiver of a dependent child 13 years of age and under OR a disabled individual	This scenario demonstrates that the individual is compliant throughout the entire 6 month look-back period by meeting the mandatory Parent/Guardian/Caretaker Relative/Family Caregiver exemptions each month. The exemption type changes during the look-back period based on household composition and caregiver responsibilities.
8	Individual satisfies Qualifying Activity (Working hours) and Mandatory Exemption (Caretaker relative of a disabled individual) in Renewal Look-back Period (6 months with 3 months of compliance required)	The individual works not less than 80 hours Individual is a parent, guardian, caretaker relative or family caregiver of a dependent child 13 years of age and under OR a disabled individual	This scenario demonstrates that the individual is compliant with Medicaid work requirements when they meet a qualifying activity and mandatory exemption in the renewal look-back period.

Key Considerations

Area	Detail
New Code Table values to existing Code Tables	<p>The HR1 Medicaid Community Engagement cartridge introduces some new values to your existing code tables:</p> <ul style="list-style-type: none"> • Criminal Charge Status: None • Disability Type: Chronic Substance Use Disorder • Student Status: Three-Quarter Time and Leave of Absence <p>To avoid unexpected system or UI behaviour, customers should evaluate the usage of these code tables in their existing programs and determine whether their implementation and any customizations remains compatible or if adjustments are required to align with the new cartridge values.</p>
Integration Rules	<p>This release includes integration rules and rules attributes that customers can populate to indicate an individual’s compliance. The rules attributes are as follows:</p> <ul style="list-style-type: none"> • snapWorkComplianceTimeline • tanfWorkComplianceTimeline • adultCategoryTimeline (MAGI) • stateWaiverTimeline (MAGI) • titleIVEFosterCareTimeline (Non-MAGI) • titleIVEAdoptionTimeline (Non-MAGI) • formerFosterCareCategoryTimeline (MAGI) • IncomeAsCalculatedUnderHR1Policy71119(a)(xx)(2)(F) <p>This gives customers the flexibility to decide how that information is sourced whether through integration with rule sets, other systems or business processes based on existing architecture.</p>
Display Rules	<p>This release delivers the rules to determine HR1 community engagement compliance only. The release does not include display rules, which are used to interpret and explain the rules results to caseworkers.</p>
Data Model (CGISS Customers)	<p>The HR1 Community Engagement rules are designed to work with the HCR v8.x evidence data model. Customers who have implemented MAGI using CGISS need to determine the best approach to satisfy the rules using CGISS evidence, considering existing evidence usage and alignment with current/future program implementation.</p>

Roadmap Candidates

Later: Alignment with Interim Final Rule / CMS Clarifications



Updates to rules and evidence to support additional clarifications and guidance from CMS.

